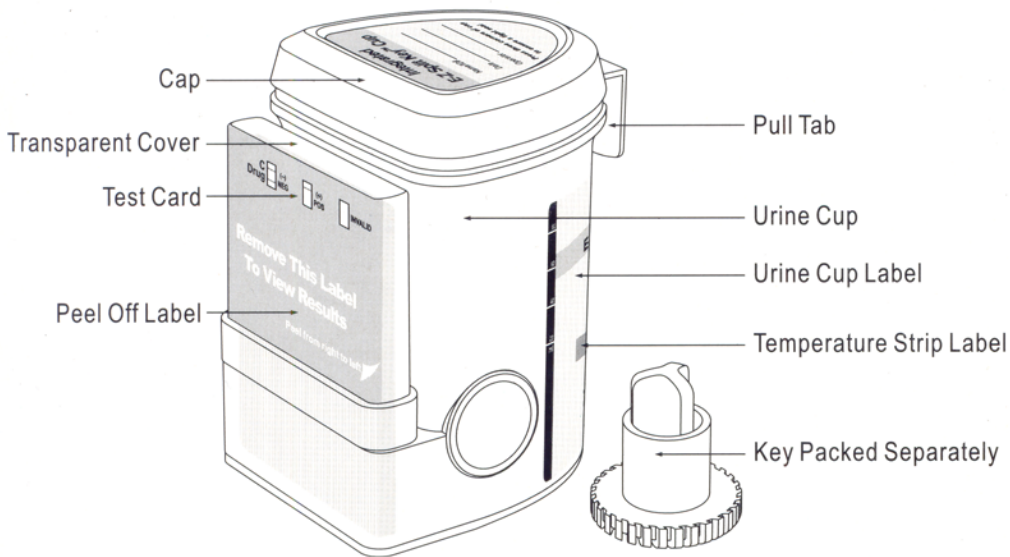
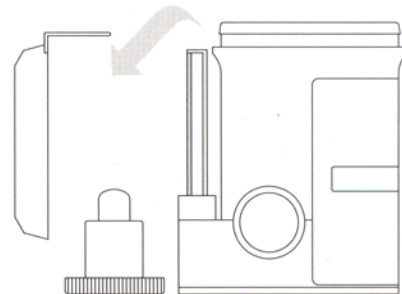


Integrated Test Cup Instructions

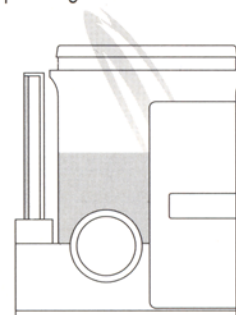
Rev 01



1 Remove cap. (Key is held by technician.)



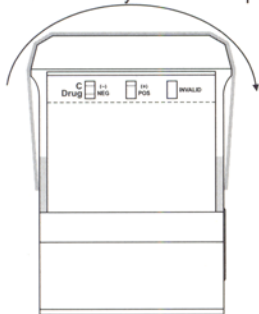
2 Donor provides specimen and secures cap. Note: Secure cap by pressing down on all three corners.



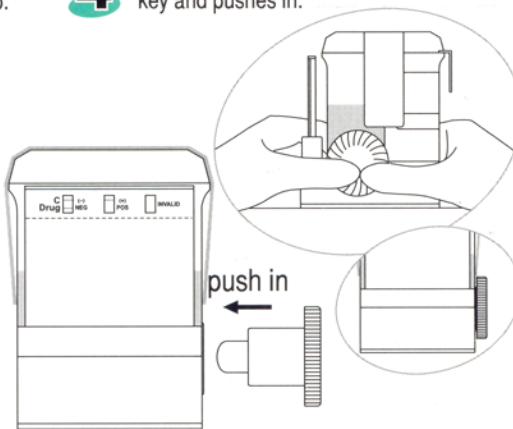
3 Check cap for tight seal. Technician dates and initials the security seal and places security seal over cap.



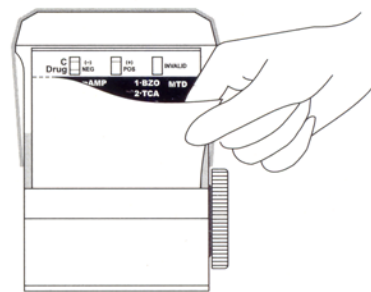
Place security seal over cup



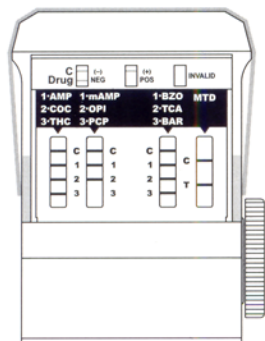
4 On a flat surface, technician inserts key and pushes in.



5 Peel off the label to view results



6 Test is read while in reaction well.



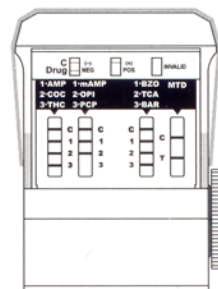
Example: test shows positive for PCP



Read results at 5 minutes.



7 A photocopy of the results can be made by placing the entire cup with the card face down on the copier.



All positive results are presumptive and should be confirmed by an alternative method (e.g. GC/MS)